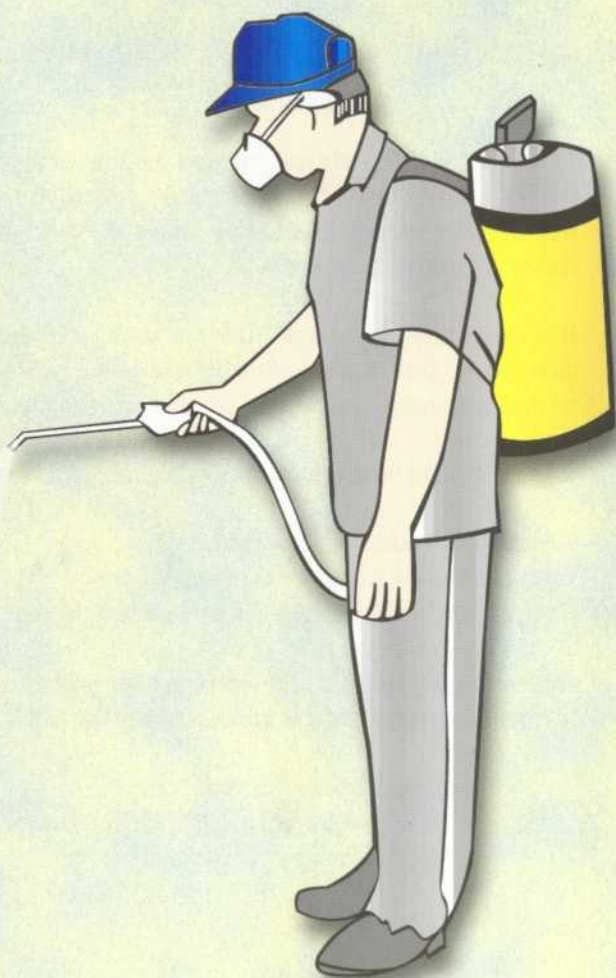


Pesticides

**USE
THEM
SAFELY**



WHAT ARE PESTICIDES?

Pesticides contain chemicals, which destroy pests, or drive them away. They may be products that you use everyday, such as fly spray, cleaning products and weedkillers. Pesticides are used against fungi, mould, insects and weeds that may be present in your home or garden; Some are also used in special paints to prevent barnacles and seaweed settling on the hulls of boats.

USING PESTICIDES SAFELY

Labels should provide information on how to apply the pesticide effectively, how to protect yourself and other people nearby, (including children) pets and the environment from harm.

It is very important to read and understand the pesticide labels. Instructions must be followed carefully so that pesticides can be used safely and effectively.

Labels should contain the following information:

What the product is approved for, e.g;
For use only as a wood preservative. The pesticide must not be used for any other purpose.

Information on who is allowed to use the pesticides, for instance whether it is approved for the use by:

- * **Amateur users** - the pesticide is available to the general public, eg the use of weedkillers in your garden;

* **Professional users** - the pesticide can only be applied by people who have to use pesticides as part of their work and who have received appropriate training to enable them to do this safely.

* **Industrial users** - the pesticide can only be used in industrial wood pre-treatment plants to protect wood against fungi or insect attack. It can only be applied by people who have to use pesticides as part of their work and who have received appropriate training to enable them to do this safely.

Whether any protective clothing or equipment needs to be worn when using the pesticide:

- * Always wear personal protective equipment such as gloves, face masks and safety goggles.
- * Always wear earmuffs whenever operating noisy equipment.

How to use the pesticide without harming yourself, other people or pets:

- * Always make sure that equipment is in a safe and sound condition.
- * Always store pesticides and fill spraycans in a well ventilated area.
- * Never eat, drink or smoke when handling chemicals, or in chemical storage areas.
- * Always shower after spraying or applying chemicals.
- * Always wash and store personal protective equipment after using pesticides.

Whether access to treated areas need to be:

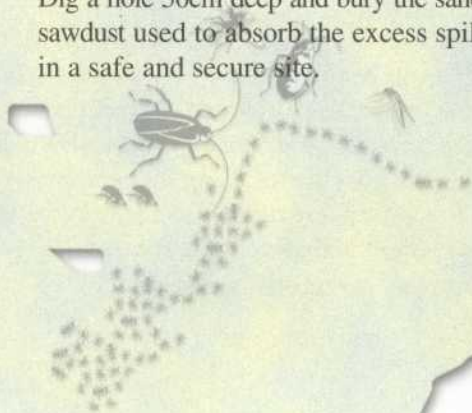
- * Always put up warning sign during the application of pesticides.

How to apply the pesticide effectively:

- * Always follow the instruction on the labels carefully and apply pesticides safely.
- * Always ensure that equipment is in good working order.
- * Always spray pesticides with the wind and never against it.

What to do if pesticide are accidentally spilled:

- * Always try to contain pesticides at the site of spillage.
- * Prevent human and livestock from approaching the contaminated site.
- * Use sand and saw-dust to absorb the pesticide spillage and scoop it up with caution.
- * Wash the contaminated site with water.
- * Dig a hole 50cm deep and bury the sand or sawdust used to absorb the excess spillage in a safe and secure site.





FIRST AID

What to do that pesticides enter your eyes:

- Symptoms of pesticides entering your eyes may include a stinging itch and redness of the eyes.
- Flush out your eyes with running water for at least 15 minutes and seek medical advise immediately.

In the event of skin contact with pesticides:

- * Wash the exposed area with clean running water including clothing and equipment. Consult a doctor if needed.

In the event that pesticides are ingested:

- Always follow the first aid advise on the pesticide label, if available.
- Call an ambulance or bring to the hospital immediately. If possible bring along the pesticide container to the hospital.
- Do not give any fluids if victim is vomiting or unconcious.

Provided that the instructions are followed, there should be no health problems. If you feel ill after using the pesticide, you should contact your doctor. Make a note of the product name, and active ingredient to give to your doctor. Keep the container if possible. You can also report the incident to the Occupational Health Unit, Public Health Service, so that any necessary action can be taken.

**Read the label before
you buy**

**Use Pesticides
Safely**



Produce by Occupational Unit and
Health Promotion & Education Unit
Ministry of Health
Negara Brunei Darussalam

OHS/01/Pest/2001