

PROCEDURE FOR SENDING FOOD, WATER, SWAB, COSMETIC AND PHARMACEUTICAL SAMPLES

- Fill in Test Request Form MIC(F)-G01 (Paying customers) and settle payment (exact amount or cheque).
- Fill in Form MIC(F)-F03 (Food), MIC(F)-W03 (Water), MIC(F)-P03 (Pharmaceutical), MIC(F)-C03 (Cosmetic) or MIC(F)-S03 (Swabs and Environmental Sample).
- Samples will be checked and labelled.
- Appropriate worksheets will be filled in by receiving staff.

SAMPLES ACCEPTING CRITERIA

FOOD & WATER SAMPLES:

- Must be in suitable sterile containers (food) and in sterile container containing sodium thiosulphate (water) or in original packaging.
- Sample weight must not be less than 300 g (food) and not less than 500 ml (water).
- For commercial sterility testing (food), samples must be sent in triplicates (3).
- Samples must be sent within 24 hours of sampling.
- Must have accompanying letter (where applicable).

PHARMACEUTICAL & COSMETIC SAMPLES:

- Must be kept in original containers.
- Volume should not be less than 50 g or ml for (pharmaceutical) and should not be less than 10 g or ml for (cosmetic) (exception: not less than 20 g for lipstick) and sent in duplicate.
- Must have accompanying letter (where applicable).

SWAB SAMPLES:

- In suitable swab containers.
- Must have accompanying letter (where applicable).

Type of tests available

Food Samples

- Total Plate Count
- Total Coliform and *E.coli* Count
- Commercial Sterility
- Yeast and Mould Count
- Staphylococcus aureus*
- Bacillus cereus*
- Salmonella* spp.
- Vibrio* spp.
- Listeria monocytogenes*

Water Samples

- Total Plate Count
- Total Coliform and *E.coli* Count
- Pseudomonas aeruginosa*
- Staphylococcus aureus*
- Salmonella* spp.
- Vibrio* spp.
- Bacterial Endotoxin
- Legionella pneumophila*

Pharmaceutical Products

- Total Aerobic Microbial Count
- Total Yeast and Mould Count

Cosmetic Products

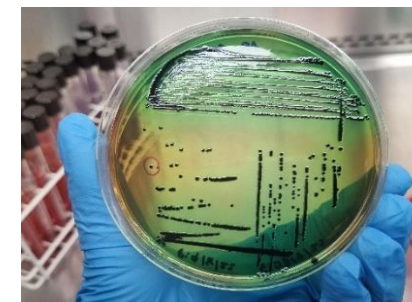
- Total Aerobic Microbial Count
- Total Yeast and Mould Count

Environmental Samples

- Total Plate Count
- Yeast and Mould Count
- Coliforms
- Salmonella* spp.
- Staphylococcus aureus*
- Listeria monocytogenes*

MICROBIOLOGICAL ANALYSIS

FOOD / WATER / ENVIRONMENTAL SWABS / PHARMACEUTICALS / COSMETICS



RECEIVING TIME (DSS, SERASA BRANCH)

Monday — Thursday and Saturday

- 8:00 — 11:45 am
- 1:45 — 3:45 pm

PAYMENT TIME (DSS, MAIN BRANCH)

Monday — Thursday Saturday

- 8:00 — 11:00 am
- 8:00 — 10:30 am
- 1:45 — 3:00 pm

RECEIVING TIME (SERASA) AND PAYMENT (DSS, MAIN BRANCH) DURING MONTH OF RAMADHAN

Monday — Thursday & Saturday

- 8:30 am — 12:00 pm

(PAYMENT MUST BE EXACT AMOUNT OR CHEQUE ADDRESS TO "GOVERNMENT OF BRUNEI DARUSSALAM")

**Microbiology Section,
Department of Scientific Services
(Serasa Branch),
Ministry of Health, Jalan Perusahaan
Serasa, Muara BT1725
Negara Brunei Darussalam
Tel: 2772600**