

MINISTRY OF HEALTH
BRUNEI DARUSSALAM

***HEALTH
INFORMATION
BOOKLET
2006***

STATISTICS UNIT
RESEARCH AND DEVELOPMENT SECTION
DEPARTMENT OF POLICY AND PLANNING
MINISTRY OF HEALTH

Contents

Preface	
Vision and Mission	
Organisation Structure	
Geography	1
Demography	2
Population Pyramid	3
Vital Statistics	4
Health Facilities	5
Distribution Map of Health Care Facilities	6
Manpower	7
Government Health Expenditure	8
Hospital Services Statistics	9
Health Services Statistics	10
General O/P Attendances For Health Centres	11
Nutritional Status	12
Outpatient Morbidity	13
Inpatient Morbidity	14
Notifiable Diseases	16
Top 10 Causes of Death	17
Cardiovascular Diseases	18
Cancer	19
Diabetes Mellitus	20
Road Traffic Accidents	21
Contact Address and Personnel	22
Acknowledgement	23

PREFACE

Bismillahir Rahmanirrahim.
Assalamualaikum Warahmatullahi Wabarakatuh.

Since its initial publication in 1996, Health Information Booklet (HIB) 2006 is the eleventh edition of the booklet series successfully published by Statistics Unit and it overviews the progress of health development in Brunei Darussalam. The HIB 2006 is a source of valuable and updated information on health statistics being compiled from various departments in the Ministry of Health and other relevant departments.

The annual HIB publication is a great effort produced by Statistics Unit to disseminate reliable and useful health and health-related statistics and will significantly contribute to the appropriate use of planners, policy-makers, researchers, academician and the general public as a reference guide.

We believe that this booklet will provide the necessary information that can assist the users in their works and we welcome all comments and suggestions for the development of this booklet in future.

Last but not least, we would like to take this opportunity to gratefully acknowledge all respective relevant for their contribution in providing the data. Statistics Unit will continue to improve the quality of HIB publication to be more informative and beneficial and will become absolute necessity for every user.

HAJAH FATMAH BINTI PJDSMDSU (DR) HAJI MD JAMIL
Director of Policy and Planning
Ministry of Health
Negara Brunei Darussalam

MINISTRY OF HEALTH

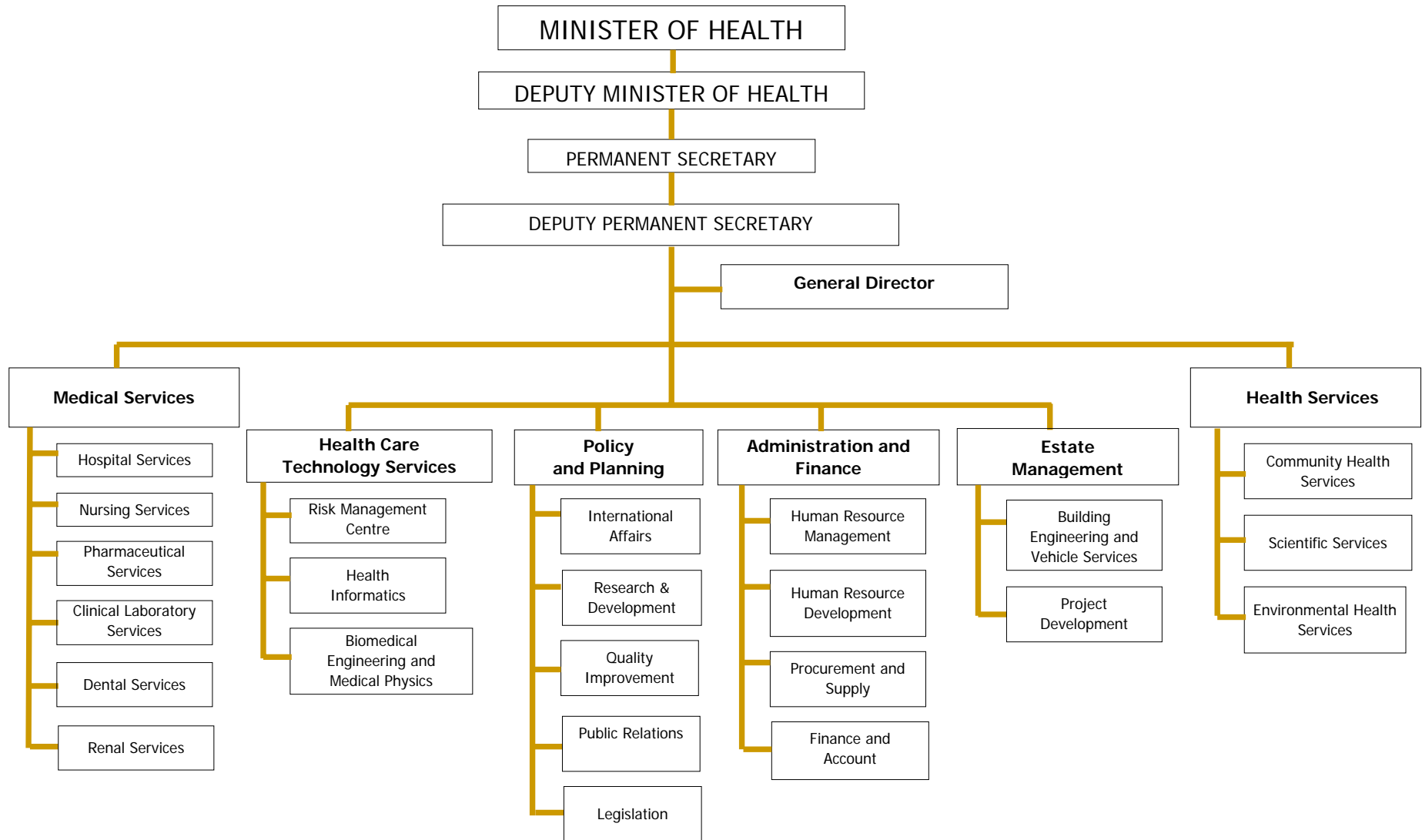
VISION

" To strive to become a highly reputable health service organization which is comparable to the best in the region and which will enable every citizen and resident of the nation to attain a high quality of life by being socially, economically and mentally productive throughout the life span "

MISSION

" To improve the health and well being of the people of Brunei Darussalam through a high quality and comprehensive health care system which is effective, efficient, responsive, affordable, equitable and accessible to all in the country "

ORGANISATION STRUCTURE FOR THE MINISTRY OF HEALTH



GEOGRAPHY

Brunei Darussalam covers an area of 5,765 sq. km and lies about 443km north of the equator. Brunei is located on the northwest coast of the island of Borneo in the South China Sea, wedged between the Malaysian states of Sabah and Sarawak. It is bounded on all landward sides by Sarawak, which splits Brunei into two parts.

CAPITAL	:	BANDAR SERI BEGAWAN
DISTRICTS	:	4
MUKIMS	:	39
KAMPONGS / LOCALITY	:	430
HOUSEHOLDS	:	55,696 (2001 Census)
AV. NO. PERSONS PER HOUSEHOLD	:	6.0

DEMOGRAPHY

Brunei Darussalam conducts population census every 10 years. The latest census was done in 2001. Demographic data as a basic requirement for the detection of health disease pattern and trend are as follows:

Estimated Population (2006):

Total	:	383.0 Thousands
Male	:	203.3 Thousands
Female	:	179.7 Thousands
Sex Ratio (M / 100F)	:	113
Persons / sq.km	:	66
Annual rate of increase	:	3.5%

Age Structure :

0 - 4	:	12.8%
5 - 19	:	26.7%
20 - 54	:	54.3%
55 - 64	:	3.5%
65 & Over	:	2.7%

Race :

Malay	:	66.7%
Chinese	:	11.2%
Others *	:	22.1%

District :

Brunei-Muara	:	69.1%
Belait	:	16.7%
Tutong	:	11.6%
Temburong	:	2.6%

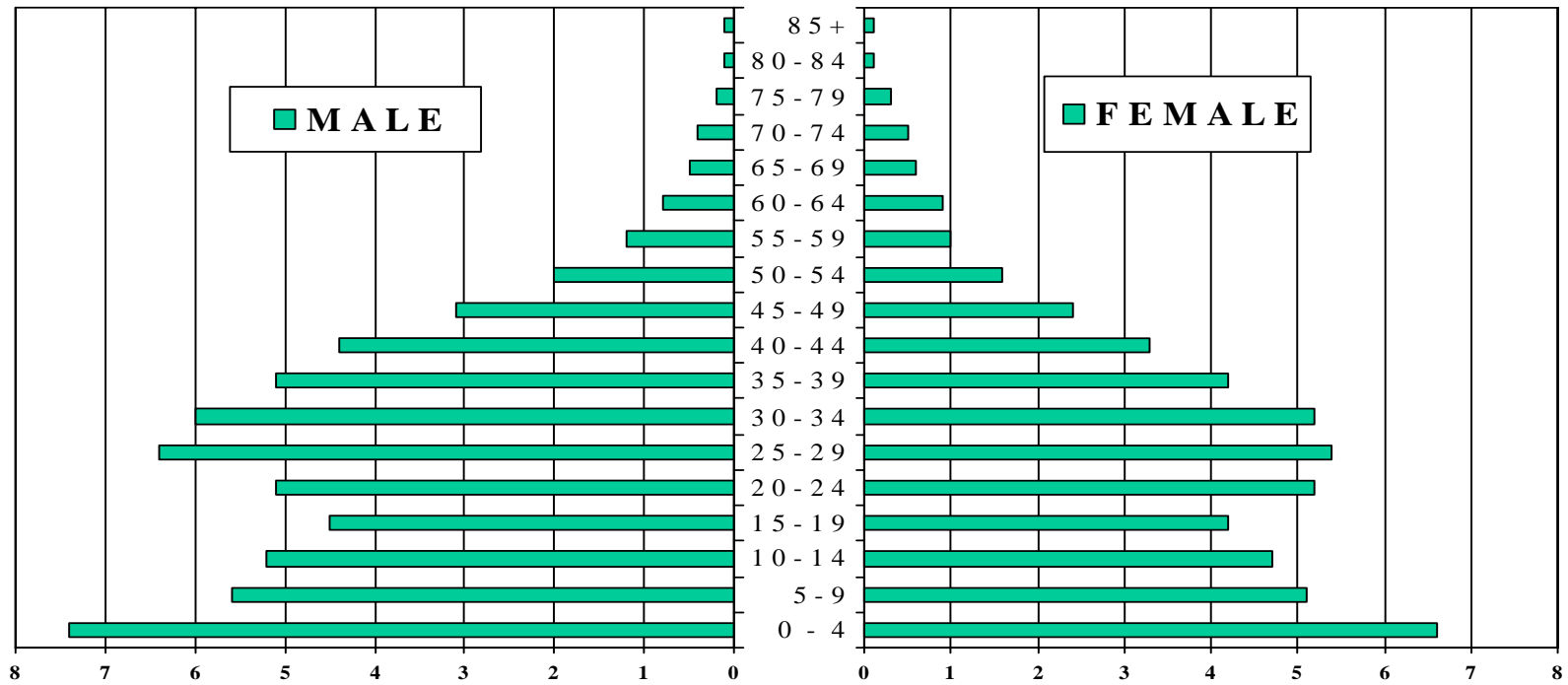
Note :

* - Including Other Indigenous

Source :

Department of Economic Planning & Development, Prime Minister's Office

POPULATION PYRAMID - 2006



VITAL STATISTICS

	<u>2002</u>	<u>2003</u>	<u>2004</u>	<u>2005</u>	<u>2006</u>
Crude Birth Rate (per 1,000 Popn.) :	21.7	20.2	19.9	18.7	(p)17.1
General Fertility Rate (per 1,000 Women (15-49)) :	76.4	71.8	71.6	68.1	(p)62.6
Total Fertility Rate (per Women (15-49)) :	2.2	2.1	2.1	(p) 2.1	(p) 2.2
Crude Death Rate (per 1,000 Popn.) :	3.0	2.9	2.8	2.9	2.9
Under 5 Mortality Rate (per 1,000 LBs.) :	10	11.8	9.8	9.4	(p)9.2
Late Fetal Death Ratio (per 1,000 LBs.) :	6.7	6.8	6.0	6.1	(p)4.6
Perinatal Mortality Ratio (per 1,000 LBs.) :	10.3	12.1	9.5	8.7	(p)7.5
Early Neonatal Mortality Rate (per 1,000 LBs.) :	3.6	5.3	3.5	2.6	(p)2.9
Late Neonatal Mortality Rate (per 1,000 LBs.) :	1.6	2.0	2.5	1.9	(p)1.8
Neonatal Mortality Rate (per 1,000 LBs.) :	5.2	7.2	6.0	4.5	(p)4.7
Post Neonatal Mortality Rate (per 1,000 LBs.) :	3.1	2.3	2.8	2.9	(p)1.8
Infant Mortality Rate (per 1,000 LBs.) :	8.3	9.5	8.8	7.4	(p)6.6
Maternal Mortality Ratio (per 1,000 LBs.) :	0.3	0.3	0.1	0.1	(p)0.2
Percentage of Deliveries by Trained Health Personnel :	99.4	99.4	99.6	99.7	99.7
Literacy Rate (%) (Age 9 yrs +) - Male :	(#) 95.8	(#) 95.8	(#) 95.8	(#) 95.8	(#) 95.8
- Female :	(#) 91.5	(#) 91.5	(#) 91.5	(#) 91.5	(#) 91.5
Per Capita GDP at current prices (B\$) Thousand :	24.2	23.6	(r) 37.0	(p) 42.9	(f) 49.4

	<u>2001</u>	<u>2002</u>	<u>2003</u>	<u>2004</u>	<u>2005</u>
Life Expectancy At Birth - Male :	74.2	74.3	74.4	74.6	(p) 74.2
- Female :	77.6	77.2	77.4	77.5	(p) 77.3
Percentage of Newborns Weighing At Least 2500g At Birth :	89.6	90.8	93.0	N/A	(p) 90.6

Note :

- Popn. - Population
- LBs - Live-births
- (p) - Provisional
- (#) - Census in 2001
- (r) - Revised
- (f) - Forecast

Red text - Millennium Development Goals (MDGs) Indicators

HEALTH FACILITIES

<u>MEDICAL CARE</u>	<u>NUMBER</u>
- HOSPITALS (4 GOVERNMENTS + 2 PRIVATE)	6
- MEDICAL CLINICS (Ministry of Defence)	6
 <u>HEALTH SERVICES</u>	
- HEALTH CENTRES *	15
- HEALTH/MATERNAL AND CHILD HEALTH CLINICS	15
- TRAVELLING HEALTH CLINICS	8
- FLYING MEDICAL SERVICES	4
 <u>DENTAL SERVICES</u>	
- DENTAL SERVICES AT:	
HOSPITALS	3
HEALTH CENTRES	8
HEALTH/MATERNAL AND CHILD HEALTH CLINICS	10
SCHOOLS	72
MOBILE SQUAD (#)	33
TRAVELLING (FLYING TEAM)	4

Note :

* Include PANAGA HEALTH CENTRE

(#) Included 15 schools by collect and sent

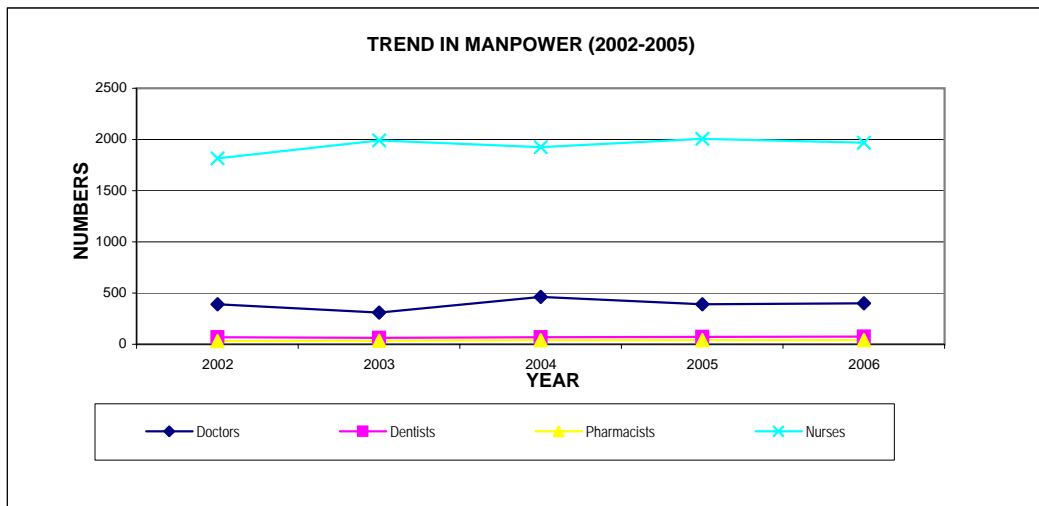
DISTRIBUTION MAP OF HEALTH CARE FACILITIES

MANPOWER

Human Resources for Health for 2006	Government	Private	Total
Doctors	344	55	399
Population per Doctor			960
Dentists	61	14	75
Population per Dentist			5,107
Pharmacists	25	16	41
Population per Pharmacist			9,341
Nurses *	1,899	71	1,970
Population per Nurse			194

Note:

* - Including Dental Nurses and Midwives



GOVERNMENT HEALTH EXPENDITURE

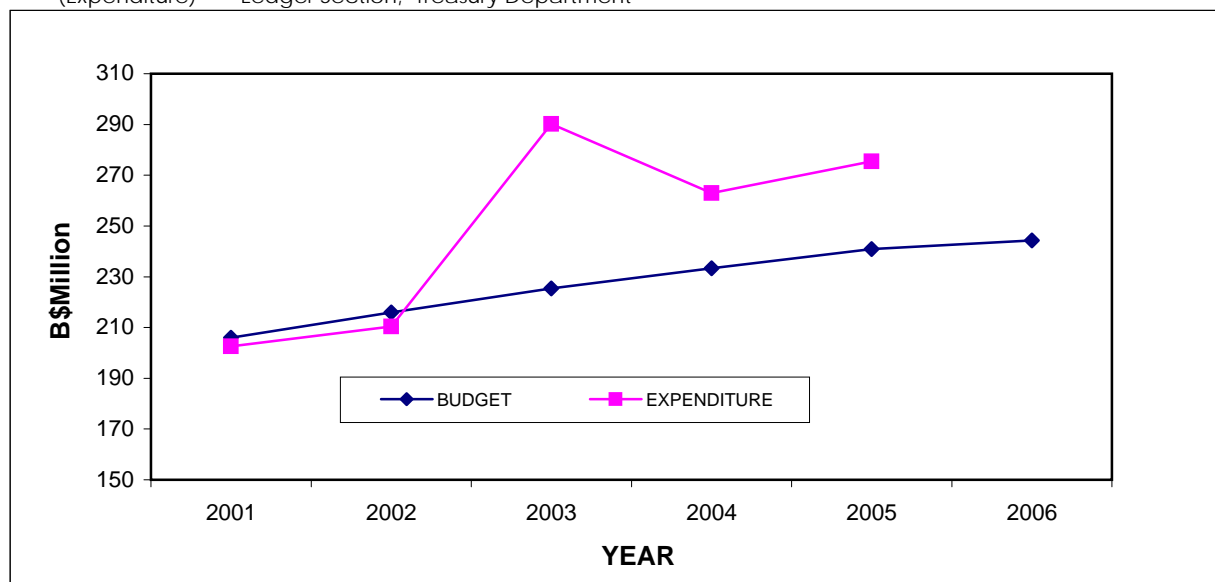
	<u>2004/05</u>	<u>2005/06</u>	<u>2006/07</u>
Total Health Budget (B\$ Millions)	233.32	240.86	244.33
Health Budget as % of National Budget	6.63	6.82	6.73
Per Capita Health Budget (B\$) #	649	651	638
Health Budget as % of GDP #	(r) 1.75	(p) 1.52	(f) 1.29
Total Health Expenditure (B\$ Millions)	262.93	275.40	...
Health Expenditure as % of Government Expenditure	7.88	7.95	...
Health Expenditure as % of GDP #	(r) 1.98	(p) 1.74	...
Per Capita Health Expenditure (B\$) #	731	744	...

Note:

- GDP - Gross Domestic Product
- ... - Not available
- (p) - Provisional
- (r) - Revised
- [f] - Forecast

Source:

- # - JPKE, Brunei Darussalam Key Indicator's 2006
- (Budget) - Budget Section, Ministry of Finance
- (Expenditure) - Ledger Section, Treasury Department



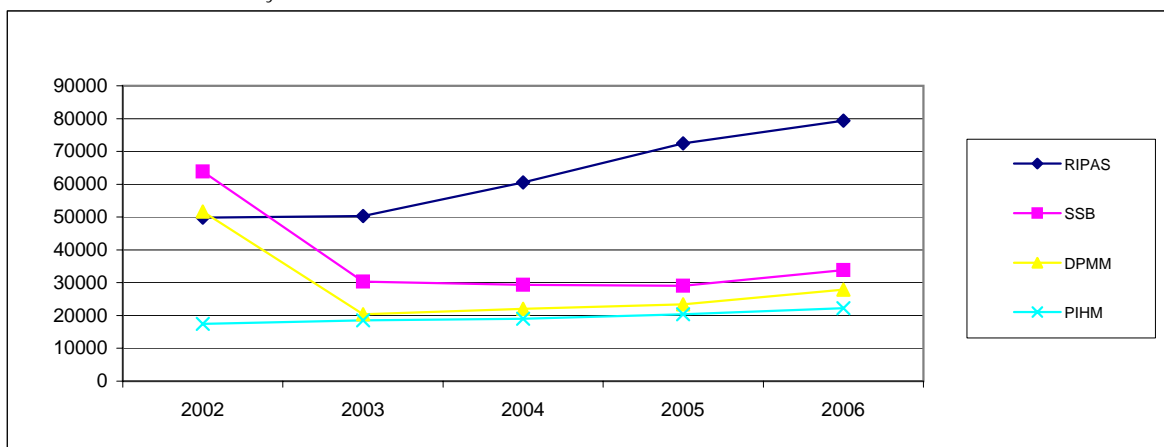
HOSPITAL SERVICES STATISTICS

The Department of Medical Services is responsible for the delivery of hospital services in all four districts. The four government hospitals plus two private hospitals (Jerudong Park Medical Centre & Gleneagles JPMC) are serving the population of Brunei Darussalam with an average turnover of patients per bed of 44 during 2006. The total inpatient load is approximately 40,000 compared to nearly 163,400 general outpatient plus A&E attendances during the year.

ACTIVITIES	RIPAS	SSB	DPMM	PIHM	TOTAL
<u>OUTPATIENT ACTIVITIES</u>					
General Outpatient and A & E Attendances	79,400 *	33,832 *	27,907 *	22,255	163,394
Specialist Outpatient Attendances	259,129	92,357	60,705	10,236	422,427
<u>INPATIENT ACTIVITIES</u>					
Available Beds	555	210	107	25	897
Admissions	28,573	6,531	3,718	963	39,785
Discharges & Deaths	28,509	6,465	3,355	774	39,103
Deaths Only	447	82	5	4	538
Patient Days	137,003	30,649	12,965	2,903	183,520
Day Patients	53,122	7,127	1	144	60,394
<u>PERFORMANCE INDICES</u>					
Average Number of Inpatients / Day	375	84	36	8	503
% Occupancy	68	40	33	32	56
Average Duration of Stay (Days)	4.8	4.7	3.9	3.8	4.7
Average Turnover of Patients / Bed	51	31	31	31	44
Average Outpatient Attendances / Day	0	0	0	52	52

Note:

* - A & E only



Note:

Decentralisation of Outpatient Services to Health Centres started in 2000 and 2001 for Brunei-Muara District and in 2002 for Tutong and Belait Districts.

HEALTH SERVICES STATISTICS

The Department of Health Services, Ministry of Health is responsible for providing public health services in the country. With its vision, "Together Achieving A Healthy Nation With Full Community Participation", the mission of the department is to promote well-being and prevent ill health. Towards achieving the vision and fulfilling the mission of the department, various activities and programmes have been developed and established under three main services: Community Health Service, Environmental Health Services and Scientific Services.

WORKLOAD INDICATORS	<u>2004</u>	<u>2005</u>	<u>2006</u>
1. Ante Natal attendances	55,816	53,627	47,082
2. Post Natal attendances	9,785	10,393	8,936
3. Child (<5) attendances	138,929	137,305	129,227
4. General O/P attendances in Health Centres / Clinics *	330,754	485,327	374,605
5. No. of students medically examined (Primary I, IV & Form II)	14,756	21,029	22,076
6. No. of students screened (Primary I, III, IV, VI & Form II)	27,376	31,014	36,561

Note :

* - including extended hours services

IMMUNISATION COVERAGE	<u>2004</u>	<u>2005</u>	<u>2006</u>
% of infants immunised against			
- Tuberculosis (at birth) **	99.4	96.4	99.9
- Diphtheria/Tetanus/Whooping Cough (Tetract-HIB)3 **	91.7	99.7	100.0
- Poliomyelitis (OPV)3 **	92.2	99.5	100.0
- Hepatitis B **	99.2	99.8	100.0
- Measles, Mumps and Rubella 1 (MMR1)**	101.1	97.4	100.0
% of pregnant women immunised against Primigravida			
- Tetanus (TT2)	47.4	41.0	79.0

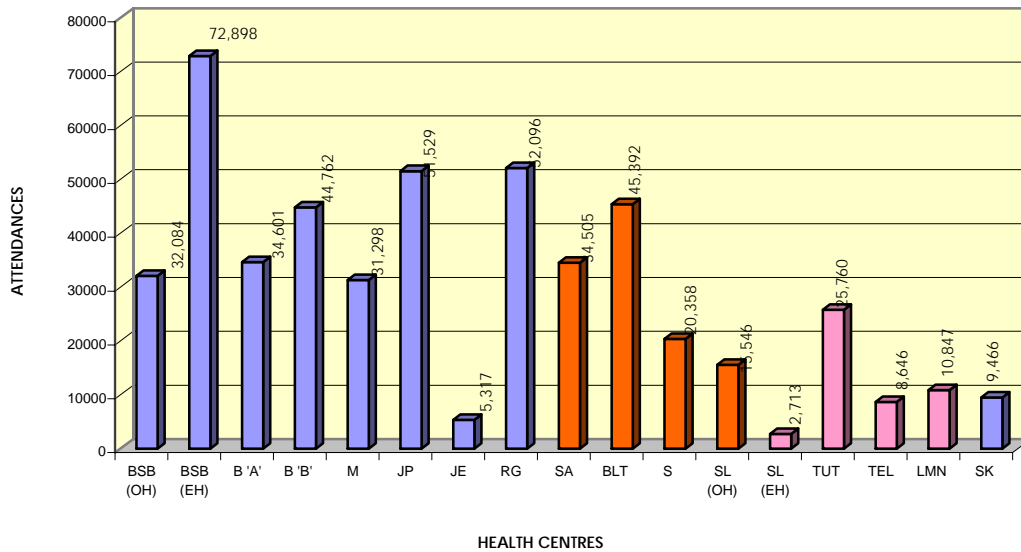
Note:

Red text - Millennium Development Goals (MDGs) Indicators

Source:

** - MCH Data (Health Facilities under MOH), Denominator Used is Total Live Birth Recorded in MCH Clinics

GENERAL O/P ATTENDANCES FOR HEALTH CENTRES IN 2006



BRUNEI MUARA HEALTH CENTRES

- BSB : BSB Health Centre
- B 'A' : Berakas 'A' Health Centre
- B 'B' : Berakas 'B' Health Centre
- M : Muara Health Centre
- JP : Jubli Perak Health Centre
- JE : Jubli Emas Health Centre
- RG : Rimba Gadong Health Centre
- SA : PAP Hjh Rashidah Sa'adatul Bolkihah Health Centre

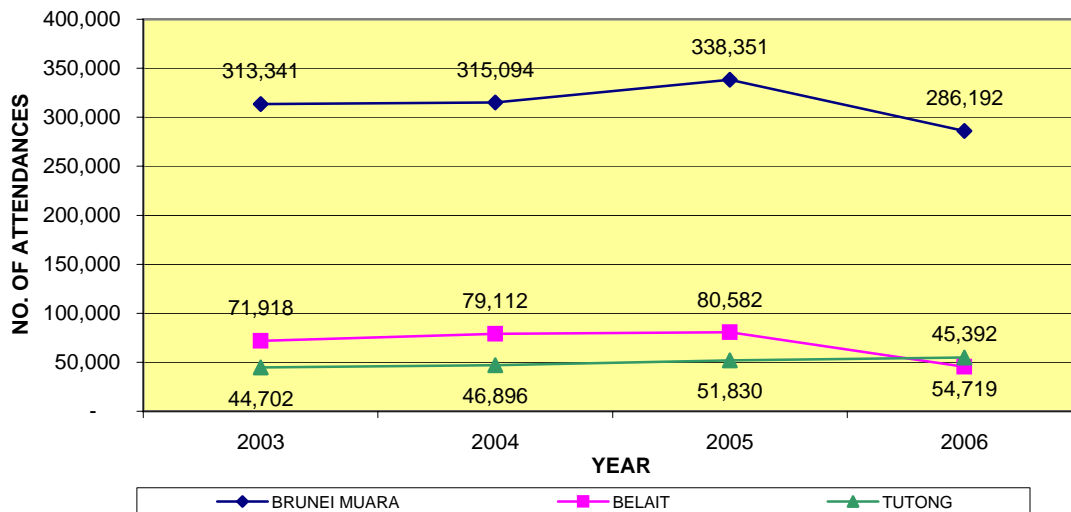
BELAIT HEALTH CENTRES

- BLT : Belait Health Centre
- S : Seria Health Centre
- SL : Sungai Liang Health Centre

TUTONG HEALTH CENTRES

- TUT : Tutong Health Centre
- TEL : Telisai Health Centre
- LMN : Lamunin Health Centre
- SK : Sungai Kelugos Health Centre

TOTAL OUTPATIENT ATTENDANCES OF HEALTH CENTRES BY DISTRICT (2004 - 2006)



NUTRITIONAL STATUS

SCHOOL HEALTH (Primary I, IV & VI and Form 2 only)	PERCENTAGE (%)				
	2002	2003	2004	2005	2006
1. Normal weight	70.4	68.7	71.5	69.9	70.0
2. Overweight	22.1	16.5	13.1	16.2	13.9
3. Obese	9.8	10.8	10.4	11.9	11.9
4. Underweight	5.7	5.5	5.0	4.2	4.4

Note :

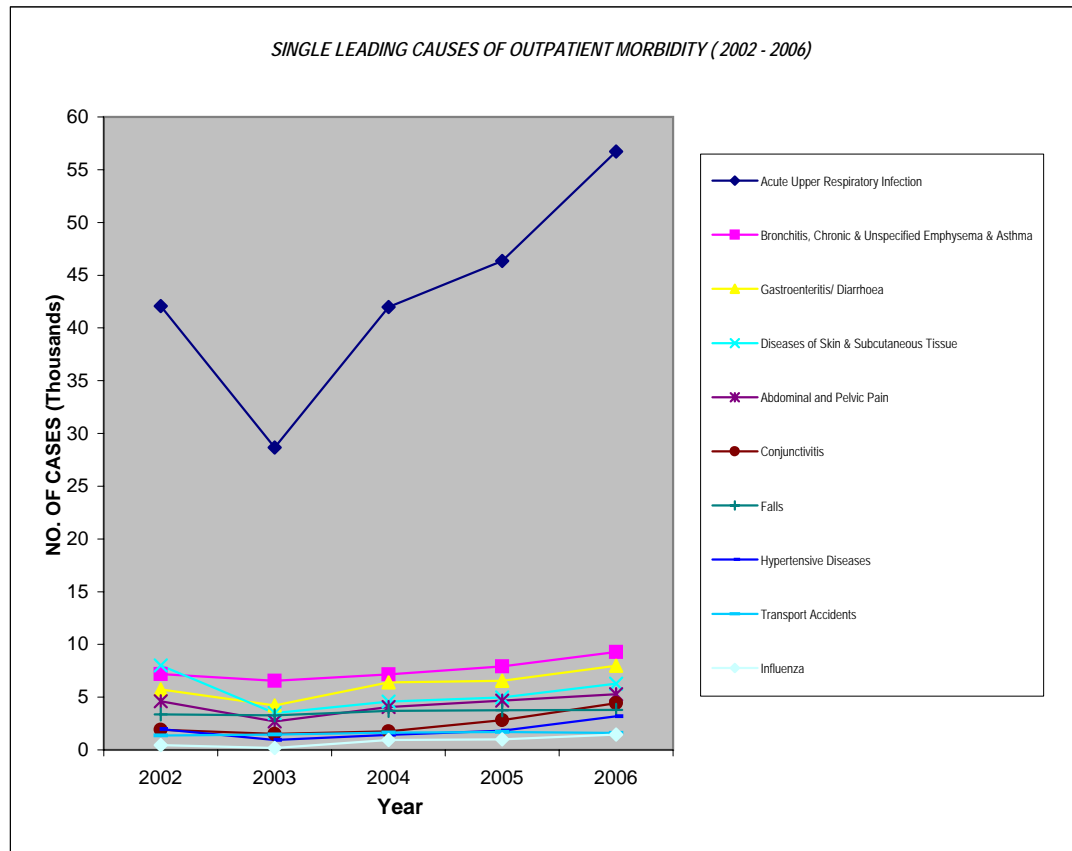
Total Number of School Target Population is **23,298** for Primary I, IV & VI and **7,572** for Form 2

MOTHER & CHILD HEALTH CLINICS (BELOW 5 YEARS) FOR THE 2006	NUMBER				TOTAL
	NEW CASES		REVIEW CASES		
	MALE	FEMALE	MALE	FEMALE	
1. Healthy Eating	24	29	18	20	91
2. Overweight	121	105	152	179	557
3. Underweight	170	215	261	370	1,016
4. Low Birth Weight (FT)	3	6	6	11	26

*** PHYSICAL GROWTH CHART (BELOW 6 YEARS) ***

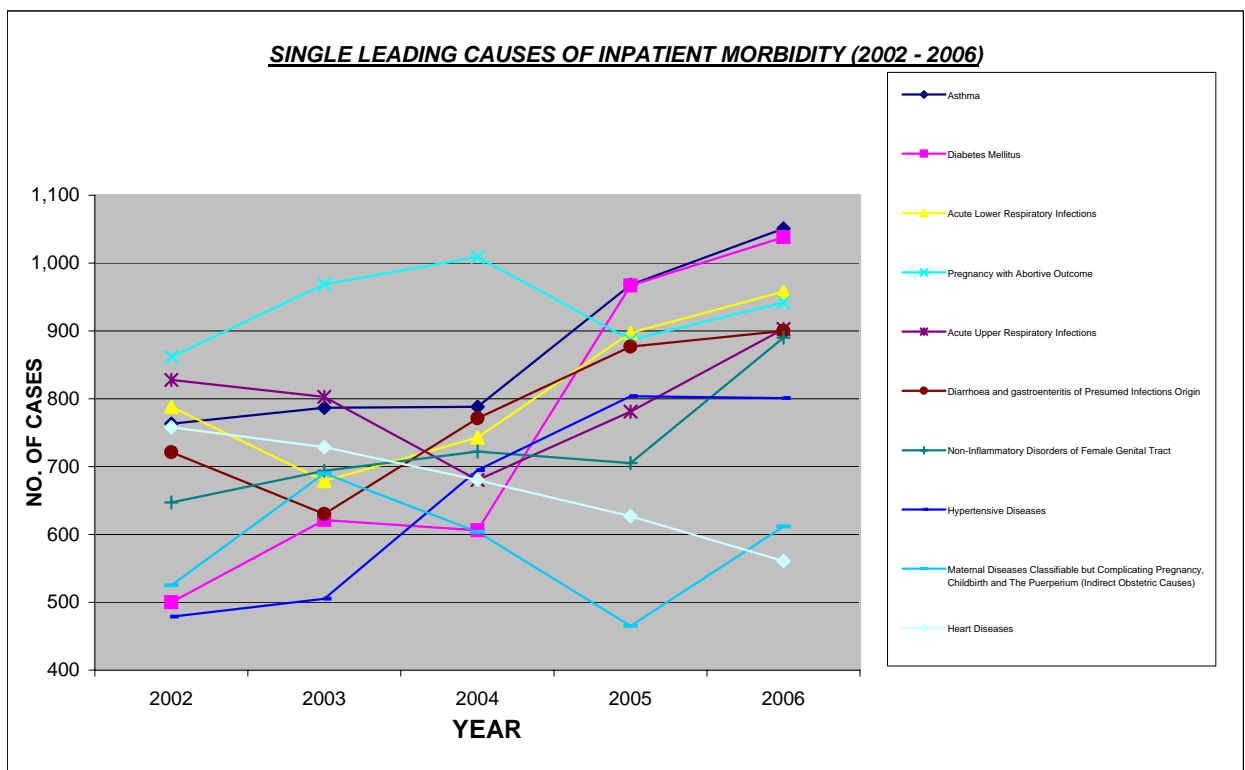
**SINGLE LEADING CAUSES OF HOSPITAL OUTPATIENT MORBIDITY
FOR THE YEAR 2006 (A & E + G O P D)**

No.	ICD-10	DISEASES	MALE	FEMALE	TOTAL	%
1	J00-J06	Acute Upper Respiratory Infection	29,095	27,614	56,709	31.2
2	J40-J46	Bronchitis, Chronic & Unspecified Emphysema & Asthma	5,192	4,077	9,269	5.1
3	A09	Gastroenteritis/ Diarrhoea	4,241	3,746	7,987	4.4
4	L00-L99	Diseases of Skin & Subcutaneous Tissue	3,034	3,247	6,281	3.5
5	R10	Abdominal and Pelvic Pain	2,300	2,987	5,287	2.9
6	H10	Conjunctivitis	2,365	2,075	4,440	2.4
7	W00-W19	Falls	2,322	1,479	3,801	2.1
8	I10-I15	Hypertensive Diseases	1,381	1,792	3,173	1.7
9	V01-V99	Transport Accident	968	625	1,593	0.9
10	J10-J11	Influenza	771	700	1,471	0.8
11	B01	Chickenpox	751	629	1,380	0.8
12	E10-E14	Diabetes	499	649	1,148	0.6
13	K25-K27	Gastric, Duodenal and Peptic Ulcer	380	554	934	0.5
14	T78.4	Allergy, Unspecified	431	463	894	0.5
15	K00-K08	Diseases of Teeth & Supporting Structures	472	358	830	0.5
Others			40,714	35,693	76,407	42.1
Grand Total			94,916	86,688	181,604	100.0



**SINGLE LEADING CAUSES OF HOSPITAL INPATIENT MORBIDITY
FOR THE YEAR 2006**

NO	ICD-10	TYPE OF DISEASES	MALE	FEMALE	TOTAL	%
1	J45-J46	Asthma	562	489	1,051	2.8
2	E10-E14	Diabetes Mellitus	450	588	1,038	2.8
3	J10-J22	Acute Lower Respiratory Infections	514	444	958	2.6
4	O00-O08	Pregnancy with Abortive Outcome	0	942	942	2.6
5	J00-J06	Acute Upper Respiratory Infections	523	380	903	2.4
6	A09	Diarrhoea and gastroenteritis of Presumed Infections Origin	505	395	900	2.4
7	N80-N98	Inflammatory Disorders of Female Genital Tract	0	890	890	2.4
8	I10-I15	Hypertensive Diseases	394	407	801	2.2
9	O98-O99	Maternal Diseases Classifiable but Complicating Pregnancy, Childbirth and The Puerperium (Indirect Obstetric Causes)	0	612	612	1.7
10	I00-I09, I20-I52	Heart Diseases	329	232	561	1.5
11	S02,S12,S22,S32,S42,S52, S72,S82,S92,T02,T08,T10, T12	Fractures Of Specified and Multiple ody Regions	394	165	559	1.5
12	W00-W19	Falls	305	163	520	1.3
13	O10-O16	Oedema, Proteinuria and Hypertensive Disorders in Pregnancy, Childbirth and the Puerperium	0	490	490	1.3
14	D50-D64	Iron Deficiency Anaemias	219	258	477	1.3
15	R50	Fever of Unknown Origin	178	248	426	1.2
Others			9,001	17,180	26,181	71.1
TOTAL EXCLUDING EXTERNAL CAUSES			12,237	23,180	35,417	100.0
GRAND TOTAL			13,235	23,648	36,883	100.0



NOTIFIABLE DISEASES

The most common communicable disease reported during 2006 are chickenpox, hand food & mouth, gonococcal infections, gastroenteritis and Tuberculosis

DISEASES	BM	TUT	TEM	KB	TOTAL
Food and Water Borne Diseases					
Cholera	0	0	0	0	0
Dysentery	3	0	0	0	3
Food Poisoning	119	37	0	1	157
Gastroenteritis	128	174	11	11	324
Hepatitis A	1	1	0	4	6
Para/Typhoid fever	2	0	0	0	2
Salmonella Infection	44	7	1	1	53
Person to Person Transmitted Diseases					
Chicken Pox	2425	622	85	41	3173
Ebola Fever	0	0	0	0	0
Hand, Foot & Mouth Disease	1497	298	64	273	2132
Influenza A	0	0	0	0	0
Influenza B	0	0	0	0	0
Influenza Others	0	0	0	0	0
Leprosy	2	0	0	0	2
Meningitis	6	1	0	0	7
Scarlet Fever	0	0	0	0	0
Severe Acute Respiratory Syndrome	0	0	0	0	0
Vaccine Preventable Diseases					
Diphtheria	0	0	0	0	0
Hepatitis B	0	0	0	0	0
Measles	6	7	0	0	13
Mumps	24	5	0	6	35
Pertussis	0	0	0	0	0
Poliomyelitis	0	0	0	0	0
Rubella	2	0	0	0	2
Smallpox	0	0	0	0	0
Tetanus	0	0	0	0	0
Tetanus Neonatorum	0	0	0	0	0
Tuberculosis	135	32	4	31	202
Sexually Transmitted Diseases					
AIDS	0	0	0	0	0
Chancroid	2	0	1	0	3
Chlamydial infection	136	5	0	5	146
Genital Herpes	0	0	0	0	0
Gonococcal infections	287	28	6	6	327
Hepatitis C	1	1	0	0	2
HIV	2	0	0	0	2
Non Gonococcal Urethritis	1	0	0	0	1
Ophthalmia Neonatorum	2	0	0	0	2
Syphilis (All forms)	10	3	0	0	13
Vector Borne Diseases					
Dengue Fever	32	7	27	2	68
Dengue Haemorrhagic Fever	0	0	0	0	0
Filariasis	11	7	1	1	20
Leptospirosis	0	0	1	0	1
Malaria	4	0	2	0	6
Plague	0	0	0	0	0
Typhus	0	0	0	0	0
West Nile Fever	0	0	0	0	0
Yellow fever	0	0	0	0	0
Zoonotic Diseases					
Anthrax	0	0	0	0	0
Bovine Spongiform Encephalitis	0	0	0	0	0
Nipah Virus	0	0	0	0	0
Rabies	0	0	0	0	0
Other Infectious Diseases					
Conjunctivitis(Chlamydia)	43	3	0	1	47
Encephalitis	0	0	0	0	0
Legionellosis	0	0	0	0	0
Puerperal infection	1	0	0	0	1
Viral Encephalitis	0	0	0	0	0
Viral Hepatitis(Unsp)	0	0	0	0	0
TOTAL	4926	1238	203	383	6750

Note:

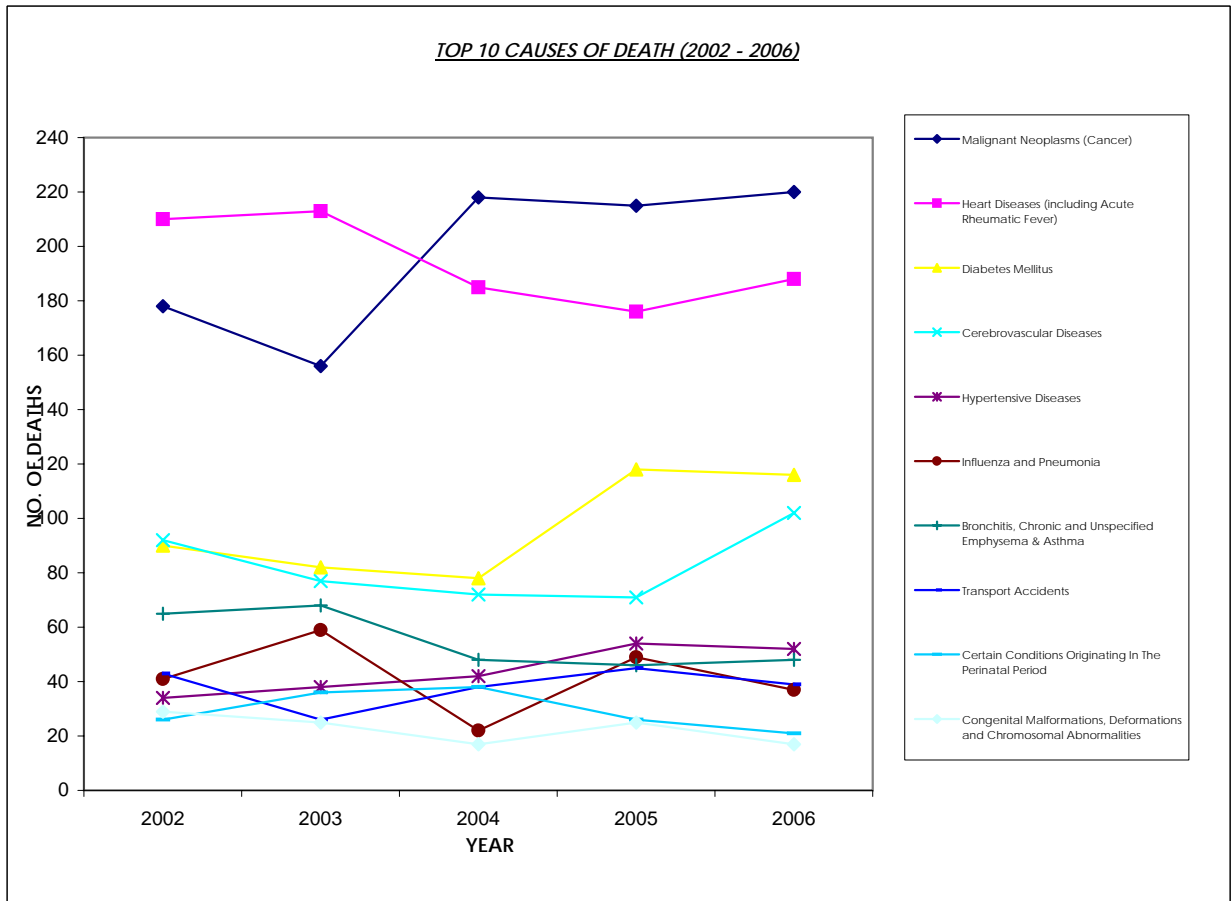
* Indicate incidence of AIDS/HIV cases among local only.

Source:

Disease Control Unit, MOH

TEN LEADING CAUSES OF DEATHS FOR THE YEAR 2006 (Based on ICD-10)

No.	ICD-10	TYPE OF DISEASE	MALE	FEMALE	TOTAL	%	RATE PER 100,000 POPN.
1	C00-C97	Cancer (Malignant Neoplasms)	108	112	220	20.1	57.4
2	I00 - I09, I20 - I52	Heart Diseases (Including Acute Rheumatic Fever)	108	80	188	17.2	49.1
3	E10 - E14	Diabetes Mellitus	71	45	116	10.6	30.3
4	I60 - I69	Cerebrovascular Diseases	55	47	102	9.3	26.6
5	I10 - I15	Hypertensive Diseases	22	30	52	4.7	13.6
6	J40 - J46	Bronchitis, Chronic & Unspecified Emphysema & Asthma	28	20	48	4.4	12.5
7	V01 - V99	Transport Accidents	31	8	39	3.6	10.2
8	J10 - J18	Influenza and Pneumonia	24	13	37	3.4	9.7
9	P00 - P96	Certain Conditions Originating In The Perinatal Period	8	13	21	1.9	5.5
10	Q00 - Q99	Congenital Malformations, Deformations and Chromosomal Abnormalities	12	5	17	1.6	4.4
Others			149	106	255	23.3	66.6
ALL DEATHS			616	479	1095	100.0	285.9



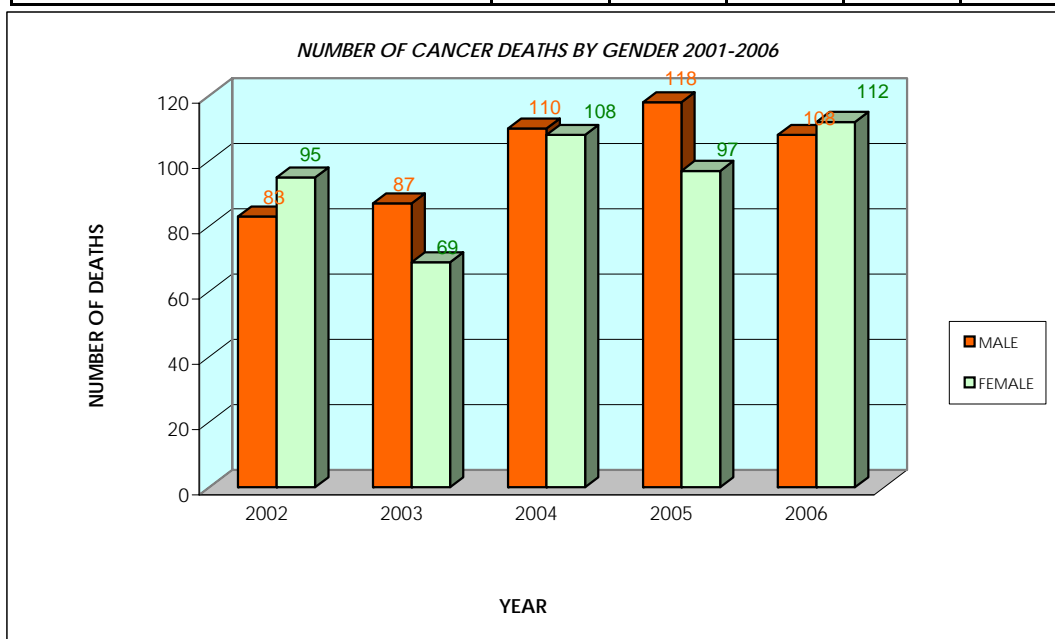
**MORTALITY DUE TO CARDIOVASCULAR DISEASES BASED ON ICD-10
FOR THE YEAR 2006**

ICD-10 CODE	TYPE OF DISEASES	AGE-GROUP IN YEARS															
		<35		35 - 44		45 - 54		55 - 64		65 - 74		75+		<i>TOTAL</i>			
		M	F	M	F	M	F	M	F	M	F	M	F	<i>M</i>	<i>F</i>	<i>T</i>	
1	I 00 - I 09, I 20 - I 52	Heart Diseases	10	1	10	1	11	8	23	7	30	23	24	40	108	80	188
i	I 00 - I 09	Acute Rheumatic Fever & Chronic Rheumatic Heart Diseases	0	0	1	0	0	0	0	0	0	1	0	0	1	1	2
ii	I 20 - I 25	Ischaemic Heart Diseases	4	0	6	1	8	7	21	5	17	9	10	10	66	32	98
	I 21	Acute Myocardial Infarction	4	0	5	1	6	4	11	3	12	4	5	6	43	18	61
	I 20, I 22 - I 25	Other Ischaemic Diseases	0	0	1	0	2	3	10	2	5	5	5	4	23	14	37
iii	I 26 - I 52	Diseases of Pulmonary Circulation & Other Forms of Heart Diseases	6	1	3	0	3	1	2	2	13	13	14	30	41	47	88
2	I 10 - I 15	Hypertensive Diseases	1	1	0	1	1	2	1	1	7	4	12	21	22	30	52
3	I 60 - I 69	Cerebrovascular Diseases	2	2	8	3	13	6	5	6	13	8	14	22	55	47	102
4	I 70 - I 98	Other Diseases of the Circulatory System	0	0	0	1	1	0	3	0	1	2	2	0	7	3	10
	I 70	Atherosclerosis	0	0	0	0	0	0	0	0	0	0	0	0	0	0	0
	I 71 - I 98	Others	0	0	0	1	1	0	3	0	1	2	2	0	7	3	10
1 to 4	I 00 - I 98	All Cardiovascular Diseases	13	4	18	6	26	16	32	14	51	37	52	83	192	160	352
		All Causes of Mortality	101	57	59	29	78	62	86	57	138	109	154	165	616	479	1095

MORTALITY DUE TO CANCER FOR THE YEAR 2006

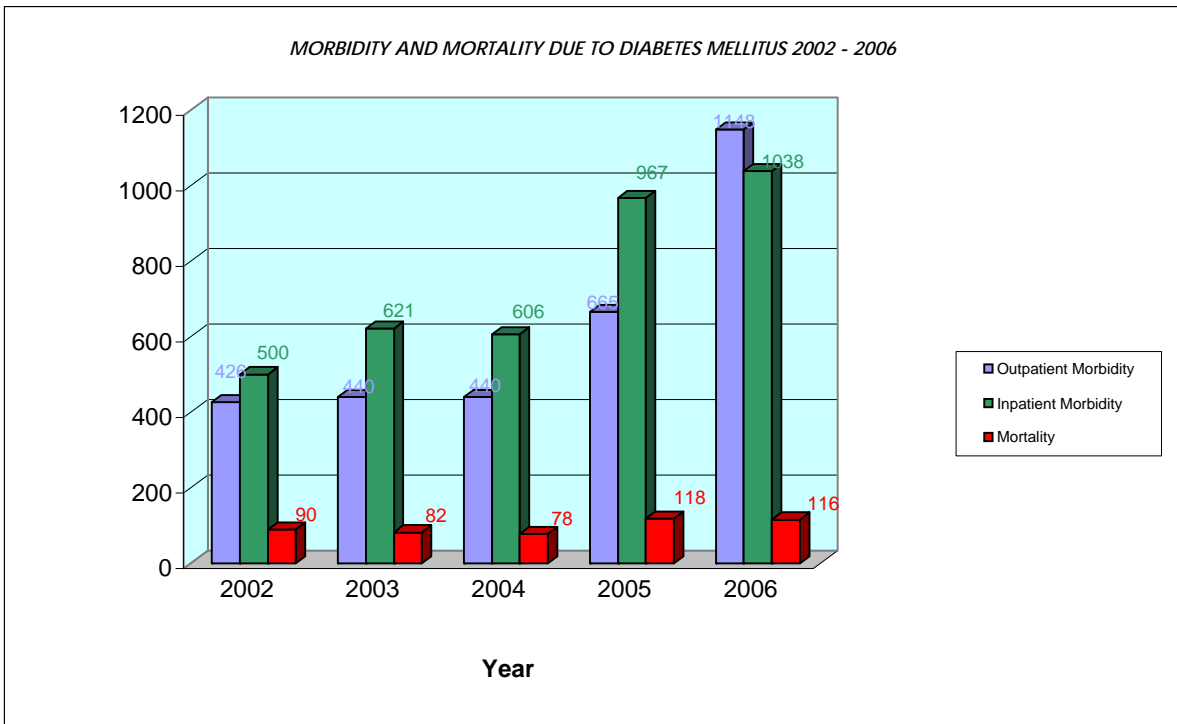
TYPE OF CANCER	MALE	FEMALE	TOTAL
Trachea, Bronchus and Lung	23	16	39
Breast	0	20	20
Lip, Oral Cavity and Pharynx	13	3	16
Rectum and Anus	10	6	16
Colon	8	5	13
Liver and Intrahepatic Bile Ducts	6	6	12
Stomach	5	6	11
Ovary	0	10	10
Pancreas	5	4	9
Cervix Uteri	0	9	9
Non-Hodkin's Lymphoma	5	2	7
Prostate	6	0	6
Meninges, Brains and Other Parts of CNS	3	2	5
Other and Unspecified Parts of Uterus	0	4	4
Multiple Myeloma and Malignant Plasma Cell Neoplasms	0	4	4
Bladder	1	2	3
Oesophagus	1	1	2
Leukaemia	2	0	2
Remainder	20	12	32
TOTAL	108	112	220

YEAR	2002	2003	2004	2005	2006
TOTAL NO. OF CANCER DEATHS	178	156	218	215	220



**MORBIDITY AND MORTALITY DUE TO DIABETES MELLITUS
FOR THE YEAR 2006**

	AGE-GROUP IN YEARS										
	0-14		15-44		45-64		65+		TOTAL		
	M	F	M	F	M	F	M	F	M	F	TOTAL
OUTPATIENT MORBIDITY	10	10	127	194	257	301	105	144	499	649	1148
INPATIENT MORBIDITY	3	3	91	128	220	262	136	195	450	588	1038
MORTALITY	0	0	4	4	25	13	42	28	71	45	116



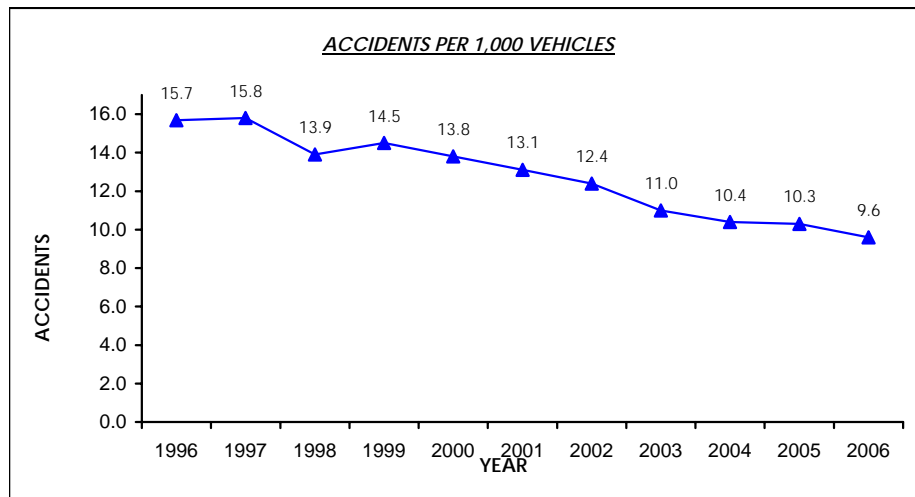
ROAD TRAFFIC ACCIDENTS

Y E A R	ACCIDENTS	KILLED	INJURED	NUMBER INJURED FOR EACH PERSON KILLED	CASE FATALITY RATE % (CFR)	REGISTERED VEHICLES (revised)
1996	2,693	64	363	5.7	15.0	171,661
1997	2,945	61	404	6.6	13.1	185,851
1998	2,692	50	531	10.6	8.6	193,845
1999	2,900	45	515	11.4	8.0	200,034
2000	2,861	41	554	13.5	6.9	206,994
2001	2,794	45	537	11.9	7.7	213,816
2002	2,801	40	549	13.7	6.8	225,650
2003	2,625	28	645	23.0	4.2	238,061
2004	2,625	36	620	17.2	5.5	252,428
2005	2,771	38	528	13.9	6.7	267,995
2006	2,710	32	555	17.3	5.5	281,524

Source :

The Royal Brunei Police Force
Land Transport Department

The accidents statistics per 1,000 vehicles show significant downward trend due to the application of preventive measures. However the case fatality rates for road traffic accidents are still high compared to other developed countries.



CONTACT ADDRESS AND PERSONNEL

Research and Development Section

Head of Section

Dyg Hajah Zahrah binti DP Haji Hashim - Assistant Director of Research and Development

Personnel

Dyg Rohaimah binti Haji Jamil - Special Duties Officer Grade I
Dyg Hajah Naedawati binti Haji Morsidi - Health Facilitator Officer
Awg Jeffry bin Damit - Statistics Officer
Dyg Saenah binti Haji Mohd Salleh - Statistics Officer
Awg Salleh bin Haji Bini - Senior Research Officer
Dyg Hajah Zaiton binti Haji Awang - Assistant Statistics Officer
Dyg Suryani binti Haji Md Saini - Assistant Executive Officer Grade I
Awg Haji Sahri bin Haji Ghani - Junior Statistics Officer
Dk Asdynah binti Pg Sahdon - Junior Statistics Officer
Dyg Hajah Norsiah binti Nasir - Clerk Grade III
Dyg Norbayah binti Haji Jaidin - Clerk Grade III
Dyg Hajah Nursamsiah binti Haji Mohd Tahir - Medical Record Assistant

For further information please contact:

*Statistics Unit
Research and Development Section
Department of Policy and Planning
2G5-02, 5th Floor
Ong Sum Ping Condominium
Bandar Seri Begawan
Brunei Darussalam*

Tel: +673 - 2230018 / 2230019

Fax: +673 - 2230019

E-mail: sthealth@brunet.bn

ACKNOWLEDGEMENT

Statistics Unit of Research and Development Section wish to acknowledge and express deepest appreciation to the various departments who have given their continuous assistance and invaluable support and commitment in providing the data for the publication of HIB 2006.

Prime Minister's Office

Department of Economic Planning and Development
Royal Brunei Police Force

Ministry of Finance

Budget and Tender Section
Ledger Section, Treasury Department

Ministry of Home Affairs

Birth, Death and Adoption Section
Immigration and National Registration Department

Ministry of Communication

Land Transport Department

Ministry of Health

Department of Medical Services
Department of Health Services